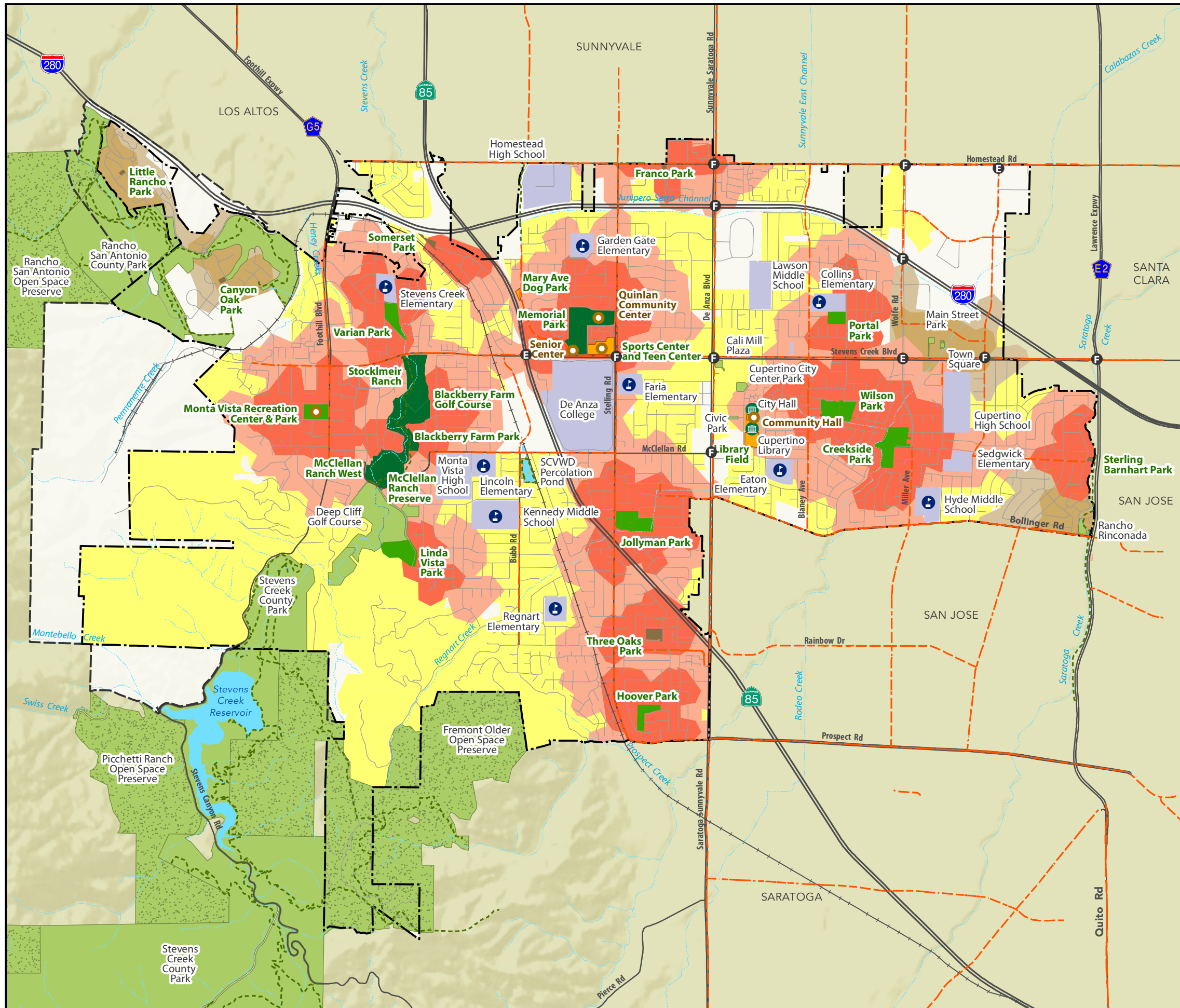




Parks & Recreation System Master Plan

CUPERTINO

Map 1B: Nearby Park Access (Draft)



Park Access Service Areas

- Within 1/4 Mile Walking/Biking Distance
- Within 1/2 Mile Walking/Biking Distance

Other Parks with Neighborhood Facilities

- Within 1/4 Mile Walking/Biking Distance
- Within 1/2 Mile Walking/Biking Distance
- Unserved Residential Areas Beyond 1/2-Mile Service Area (Residential Zoning Districts)

Park and Recreation Facilities

Cupertino Parks and Recreation Facilities

- Community Parks
- Large Neighborhood Parks
- Small Neighborhood Parks
- Special Use Sites

Other Recreation Resources

- Park & Recreation Resources
- Open Space Preserves
- Schools and Colleges

Trail Corridors and Bike Facilities

- Trail Corridors
- Class II Bike Lane

Recreation Centers/Fields

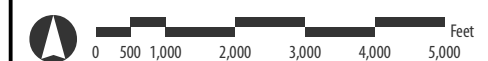
- Recreation Centers/Facilities
- Other Facilities
- School Sport Fields Managed by City

Cupertino General Plan 2040 Signalized Intersections Level of Service (LOS)

- LOS E
- LOS F

Base Map Features

- Cupertino City Boundary
- Cupertino Sphere of Influence *
- Railroad
- Creeks and Channels
- Water Bodies



July 2017

Note: * per Local Agency Formation Commission
Sources: City of Cupertino and Santa Clara County, 2017.